



Regions Bank Building

333 TEXAS STREET, SHREVEPORT, LA 71101

OFFICE SPACE FOR LEASE

Regions Bank Building is part of Regions Center which is located in the heart of downtown Shreveport. Regions Center is undoubtedly the most prestigious office complex in North Louisiana. Tenants and their guests enjoy many amenities, some of which include:

- On-site Security Personnel
- Additional Conference Rooms
- Break Room with Vending Machines
- Fitness Center
- Regions Center Atrium and it's 50' waterfall
- Wheelless Conference Center
- Nader's Art Gallery
- Bistro To Go
- On-site Management & Leasing
- Daily Janitorial Service
- Fed Ex, UPS & USPS
- Attached Parking Garage

With office spaces ranging from 200 square feet and up, the Regions Bank Building can accommodate a variety of space needs in the comfort of a professionally managed office complex.

For Additional Information, Contact:

Beth King | 318-453-6066 | beth@bethkingrealestate.com

333 Texas Street, Suite 2280, Shreveport, Louisiana 71101

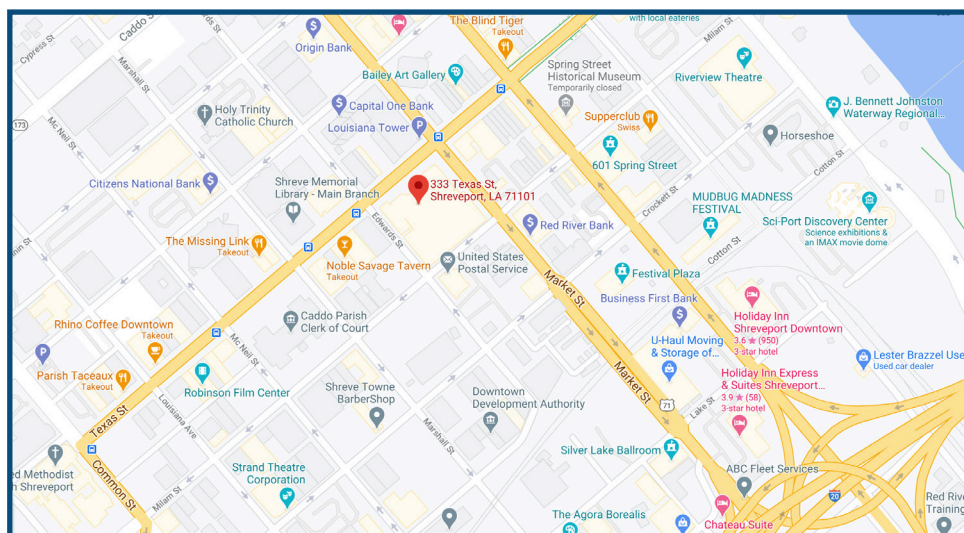
ALL INFORMATION CONTAINED HEREIN IS BELIEVED TO BE ACCURATE, BUT IS NOT WARRANTED AND NO LIABILITY OF ERRORS OR OMISSIONS IS ASSURED BY EITHER THE PROPERTY OWNER OR BETH KING REAL ESTATE, LLC OR ITS AGENTS AND EMPLOYEES. PRICES AS STATED HEREIN AND PRODUCT AVAILABILITY IS SUBJECT TO CHANGE AND/OR SALE OR LEASE WITHOUT PRIOR NOTICE, AND ALL SIZES AND DIMENSIONS ARE SUBJECT TO CORRECTION. 02/2021



Regions Bank Building

333 TEXAS STREET, SHREVEPORT, LA 71101

OFFICE SPACE FOR LEASE



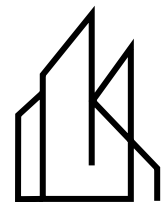
For Additional Information, Contact:

Beth King | 318-453-6066 | beth@bethkingrealestate.com

333 Texas Street, Suite 2280, Shreveport, Louisiana 71101

ALL INFORMATION CONTAINED HEREIN IS BELIEVED TO BE ACCURATE, BUT IS NOT WARRANTED AND NO LIABILITY OF ERRORS OR OMISSIONS IS ASSURED BY EITHER THE PROPERTY OWNER OR BETH KING REAL ESTATE, LLC OR ITS AGENTS AND EMPLOYEES. PRICES AS STATED HEREIN AND PRODUCT AVAILABILITY IS SUBJECT TO CHANGE AND/OR SALE OR LEASE WITHOUT PRIOR NOTICE, AND ALL SIZES AND DIMENSIONS ARE SUBJECT TO CORRECTION. 02/2021

p2



BETHKING
REAL ESTATE, LLC

Regions Bank Building

333 TEXAS STREET, SHREVEPORT, LA 71101
OFFICE SPACE FOR LEASE



For Additional Information, Contact:

Beth King | 318-453-6066 | beth@bethkingrealestate.com
333 Texas Street, Suite 2280, Shreveport, Louisiana 71101

ALL INFORMATION CONTAINED HEREIN IS BELIEVED TO BE ACCURATE, BUT IS NOT WARRANTED AND NO LIABILITY OF ERRORS OR OMISSIONS IS ASSURED BY EITHER THE PROPERTY OWNER OR BETH KING REAL ESTATE, LLC OR ITS AGENTS AND EMPLOYEES. PRICES AS STATED HEREIN AND PRODUCT AVAILABILITY IS SUBJECT TO CHANGE AND/OR SALE OR LEASE WITHOUT PRIOR NOTICE, AND ALL SIZES AND DIMENSIONS ARE SUBJECT TO CORRECTION. 02/2021

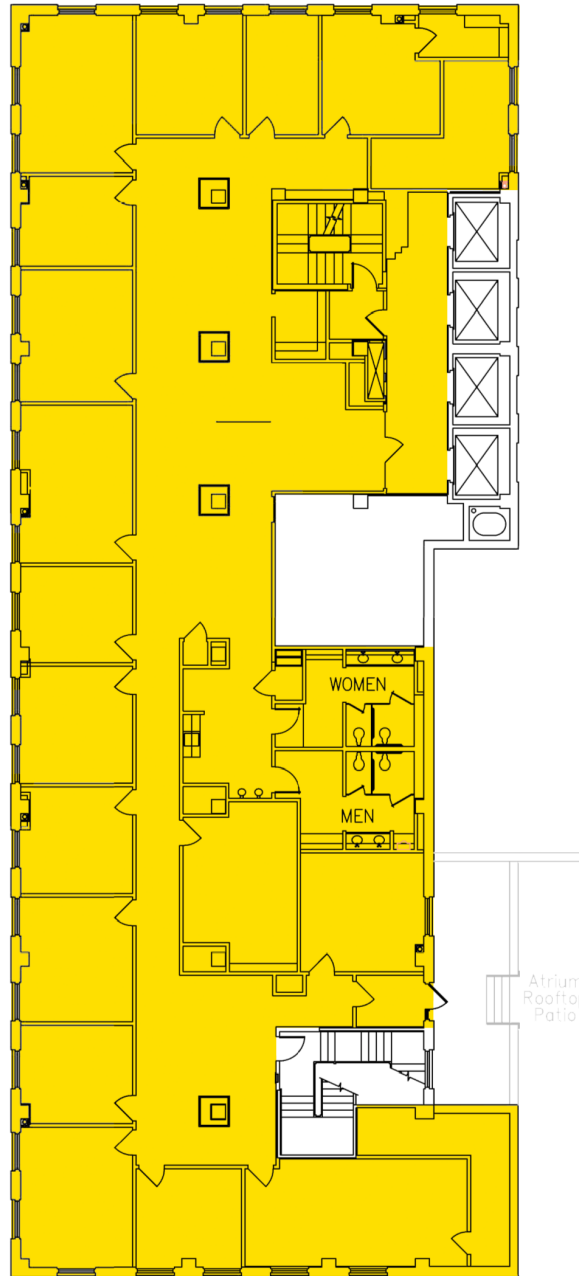
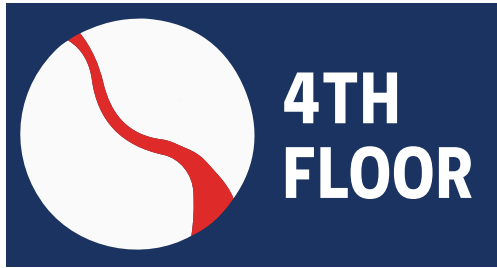
p3



Regions Bank Building

333 TEXAS STREET, SHREVEPORT, LA 71101

OFFICE SPACE FOR LEASE



 AVAILABLE — 7,694 RSF

For Additional Information, Contact:

Beth King | 318-453-6066 | beth@bethkingrealestate.com

333 Texas Street, Suite 2280, Shreveport, Louisiana 71101

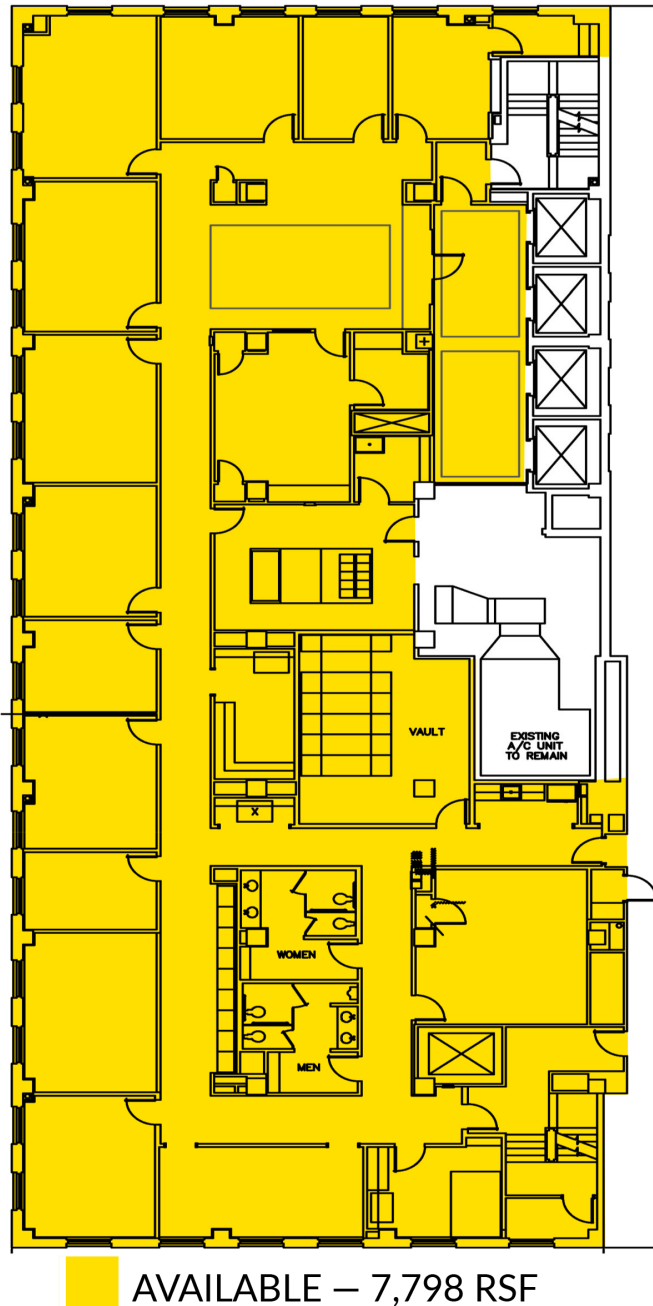
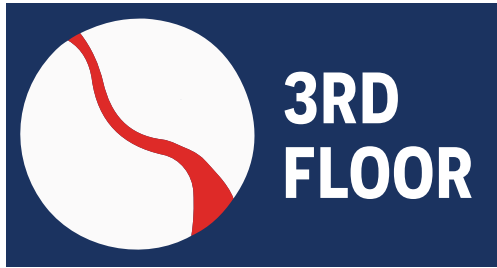
ALL INFORMATION CONTAINED HEREIN IS BELIEVED TO BE ACCURATE, BUT IS NOT WARRANTED AND NO LIABILITY OF ERRORS OR OMISSIONS IS ASSURED BY EITHER THE PROPERTY OWNER OR BETH KING REAL ESTATE, LLC OR ITS AGENTS AND EMPLOYEES. PRICES AS STATED HEREIN AND PRODUCT AVAILABILITY IS SUBJECT TO CHANGE AND/OR SALE OR LEASE WITHOUT PRIOR NOTICE, AND ALL SIZES AND DIMENSIONS ARE SUBJECT TO CORRECTION. 02/2021



p4

Regions Bank Building

333 TEXAS STREET, SHREVEPORT, LA 71101
OFFICE SPACE FOR LEASE



AVAILABLE – 7,798 RSF

For Additional Information, Contact:

Beth King | 318-453-6066 | beth@bethkingrealestate.com

333 Texas Street, Suite 2280, Shreveport, Louisiana 71101

ALL INFORMATION CONTAINED HEREIN IS BELIEVED TO BE ACCURATE, BUT IS NOT WARRANTED AND NO LIABILITY OF ERRORS OR OMISSIONS IS ASSURED BY EITHER THE PROPERTY OWNER OR BETH KING REAL ESTATE, LLC OR ITS AGENTS AND EMPLOYEES. PRICES AS STATED HEREIN AND PRODUCT AVAILABILITY IS SUBJECT TO CHANGE AND/OR SALE OR LEASE WITHOUT PRIOR NOTICE, AND ALL SIZES AND DIMENSIONS ARE SUBJECT TO CORRECTION. 02/2021

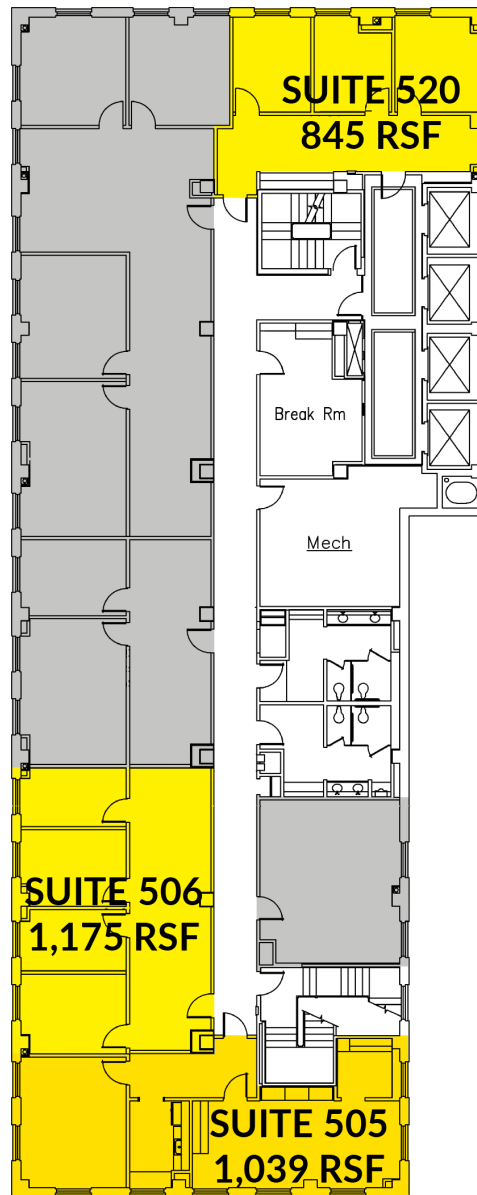
p5





Regions Bank Building

333 TEXAS STREET, SHREVEPORT, LA 71101

OFFICE SPACE FOR LEASE



 AVAILABLE — 845 RSF & 1,175 RSF & 1,039 RSF
 LEASED

For Additional Information, Contact:

Beth King | 318-453-6066 | beth@bethkingrealestate.com

333 Texas Street, Suite 2280, Shreveport, Louisiana 71101

ALL INFORMATION CONTAINED HEREIN IS BELIEVED TO BE ACCURATE, BUT IS NOT WARRANTED AND NO LIABILITY OF ERRORS OR OMISSIONS IS ASSURED BY EITHER THE PROPERTY OWNER OR BETH KING REAL ESTATE, LLC OR ITS AGENTS AND EMPLOYEES. PRICES AS STATED HEREIN AND PRODUCT AVAILABILITY IS SUBJECT TO CHANGE AND/OR SALE OR LEASE WITHOUT PRIOR NOTICE, AND ALL SIZES AND DIMENSIONS ARE SUBJECT TO CORRECTION. 02/2021

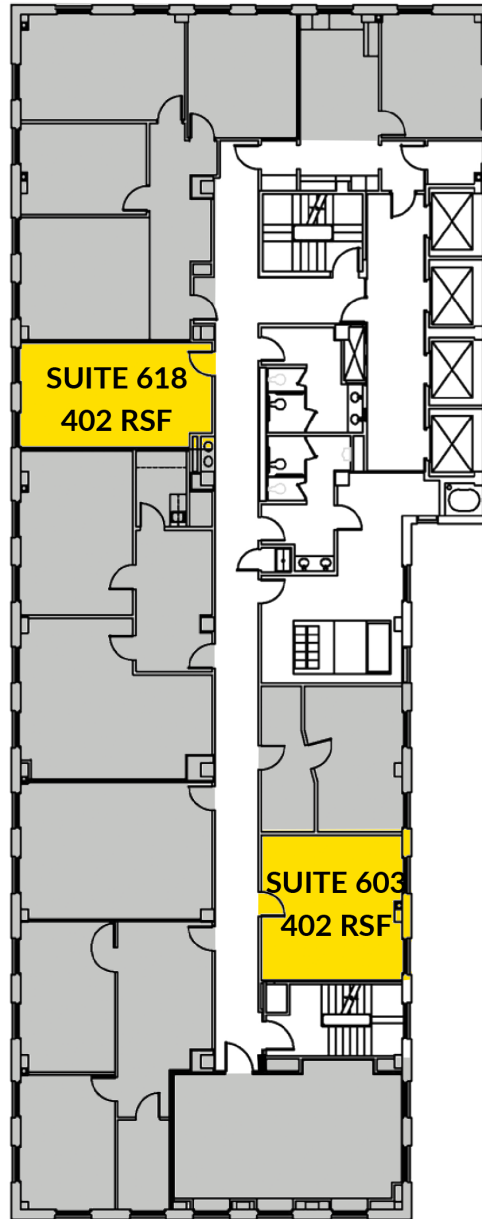
p6





Regions Bank Building

333 TEXAS STREET, SHREVEPORT, LA 71101

OFFICE SPACE FOR LEASE



 AVAILABLE — 402 RSF & 402 RSF
 LEASED

For Additional Information, Contact:

Beth King | 318-453-6066 | beth@bethkingrealestate.com

333 Texas Street, Suite 2280, Shreveport, Louisiana 71101

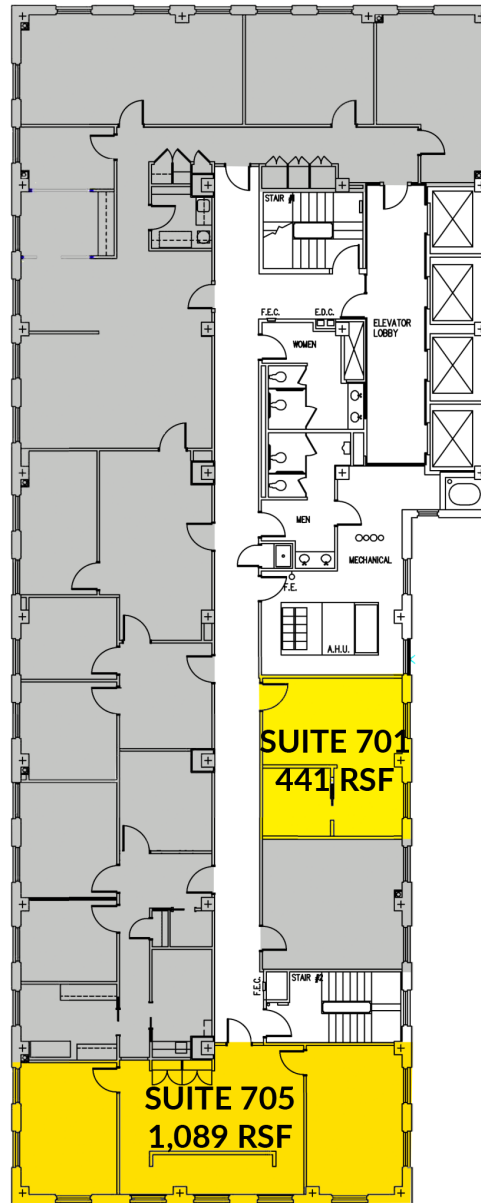
ALL INFORMATION CONTAINED HEREIN IS BELIEVED TO BE ACCURATE, BUT IS NOT WARRANTED AND NO LIABILITY OF ERRORS OR OMISSIONS IS ASSURED BY EITHER THE PROPERTY OWNER OR BETH KING REAL ESTATE, LLC OR ITS AGENTS AND EMPLOYEES. PRICES AS STATED HEREIN AND PRODUCT AVAILABILITY IS SUBJECT TO CHANGE AND/OR SALE OR LEASE WITHOUT PRIOR NOTICE, AND ALL SIZES AND DIMENSIONS ARE SUBJECT TO CORRECTION. 02/2021


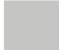
p7



Regions Bank Building

333 TEXAS STREET, SHREVEPORT, LA 71101
OFFICE SPACE FOR LEASE



 AVAILABLE — 1,089 RSF; 441 RSF
 LEASED

For Additional Information, Contact:

Beth King | 318-453-6066 | beth@bethkingrealestate.com

333 Texas Street, Suite 2280, Shreveport, Louisiana 71101

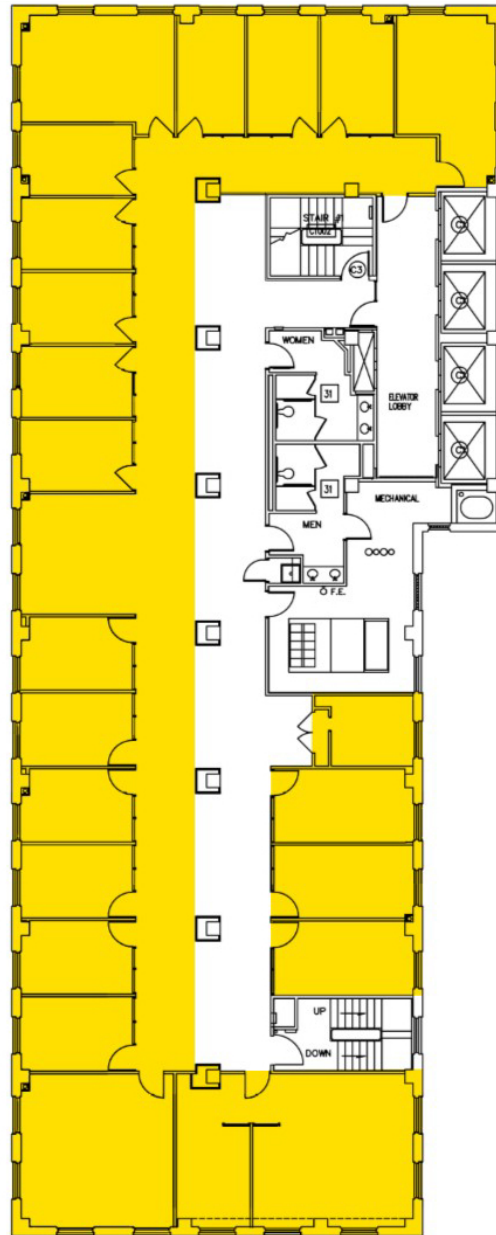
ALL INFORMATION CONTAINED HEREIN IS BELIEVED TO BE ACCURATE, BUT IS NOT WARRANTED AND NO LIABILITY OF ERRORS OR OMISSIONS IS ASSURED BY EITHER THE PROPERTY OWNER OR BETH KING REAL ESTATE, LLC OR ITS AGENTS AND EMPLOYEES. PRICES AS STATED HEREIN AND PRODUCT AVAILABILITY IS SUBJECT TO CHANGE AND/OR SALE OR LEASE WITHOUT PRIOR NOTICE, AND ALL SIZES AND DIMENSIONS ARE SUBJECT TO CORRECTION. 02/2021



Regions Bank Building

333 TEXAS STREET, SHREVEPORT, LA 71101

OFFICE SPACE FOR LEASE



AVAILABLE – 7,723 RSF
LEASED

For Additional Information, Contact:

Beth King | 318-453-6066 | beth@bethkingrealestate.com

333 Texas Street, Suite 2280, Shreveport, Louisiana 71101

ALL INFORMATION CONTAINED HEREIN IS BELIEVED TO BE ACCURATE, BUT IS NOT WARRANTED AND NO LIABILITY OF ERRORS OR OMISSIONS IS ASSURED BY EITHER THE PROPERTY OWNER OR BETH KING REAL ESTATE, LLC OR ITS AGENTS AND EMPLOYEES. PRICES AS STATED HEREIN AND PRODUCT AVAILABILITY IS SUBJECT TO CHANGE AND/OR SALE OR LEASE WITHOUT PRIOR NOTICE, AND ALL SIZES AND DIMENSIONS ARE SUBJECT TO CORRECTION. 02/2021

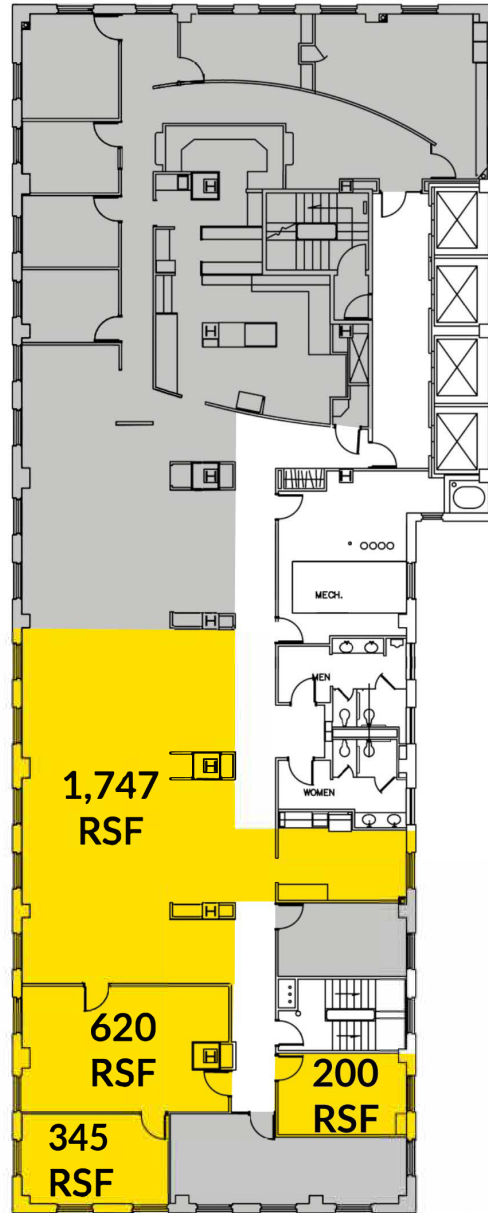
p9



Regions Bank Building

333 TEXAS STREET, SHREVEPORT, LA 71101

OFFICE SPACE FOR LEASE



AVAILABLE — 2,912 RSF (Total)

LEASED

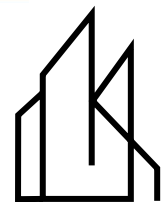
For Additional Information, Contact:

Beth King | 318-453-6066 | beth@bethkingrealestate.com

333 Texas Street, Suite 2280, Shreveport, Louisiana 71101

ALL INFORMATION CONTAINED HEREIN IS BELIEVED TO BE ACCURATE, BUT IS NOT WARRANTED AND NO LIABILITY OF ERRORS OR OMISSIONS IS ASSURED BY EITHER THE PROPERTY OWNER OR BETH KING REAL ESTATE, LLC OR ITS AGENTS AND EMPLOYEES. PRICES AS STATED HEREIN AND PRODUCT AVAILABILITY IS SUBJECT TO CHANGE AND/OR SALE OR LEASE WITHOUT PRIOR NOTICE, AND ALL SIZES AND DIMENSIONS ARE SUBJECT TO CORRECTION. 02/2021

p10

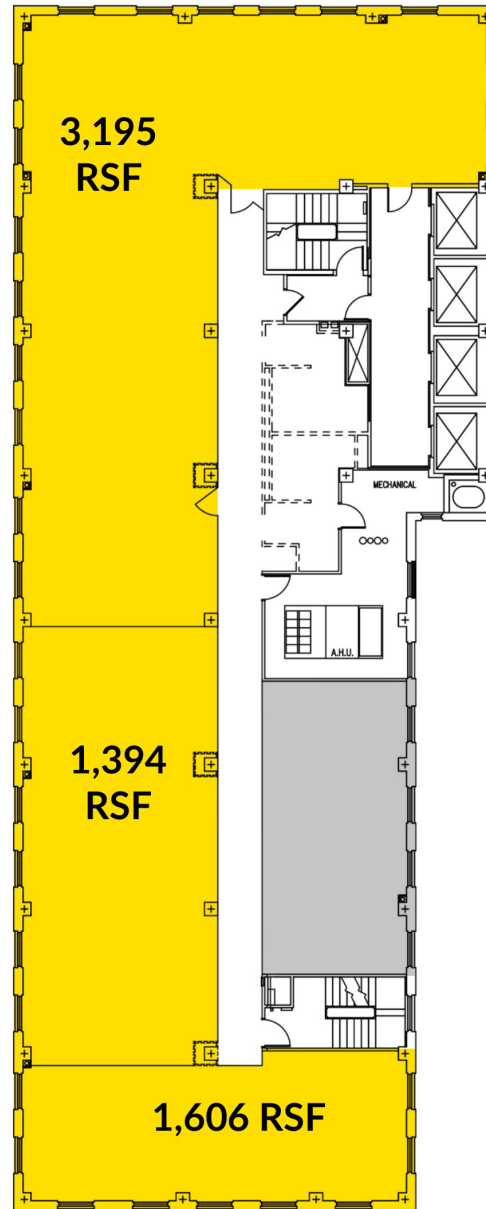


BETHKING
REAL ESTATE, LLC

Regions Bank Building

333 TEXAS STREET, SHREVEPORT, LA 71101

OFFICE SPACE FOR LEASE



 AVAILABLE — 6,195 RSF (Total)
 LEASED

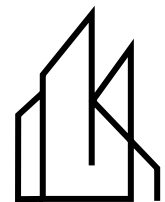
For Additional Information, Contact:

p11

Beth King | 318-453-6066 | beth@bethkingrealestate.com

333 Texas Street, Suite 2280, Shreveport, Louisiana 71101

ALL INFORMATION CONTAINED HEREIN IS BELIEVED TO BE ACCURATE, BUT IS NOT WARRANTED AND NO LIABILITY OF ERRORS OR OMISSIONS IS ASSURED BY EITHER THE PROPERTY OWNER OR BETH KING REAL ESTATE, LLC OR ITS AGENTS AND EMPLOYEES. PRICES AS STATED HEREIN AND PRODUCT AVAILABILITY IS SUBJECT TO CHANGE AND/OR SALE OR LEASE WITHOUT PRIOR NOTICE, AND ALL SIZES AND DIMENSIONS ARE SUBJECT TO CORRECTION. 02/2021

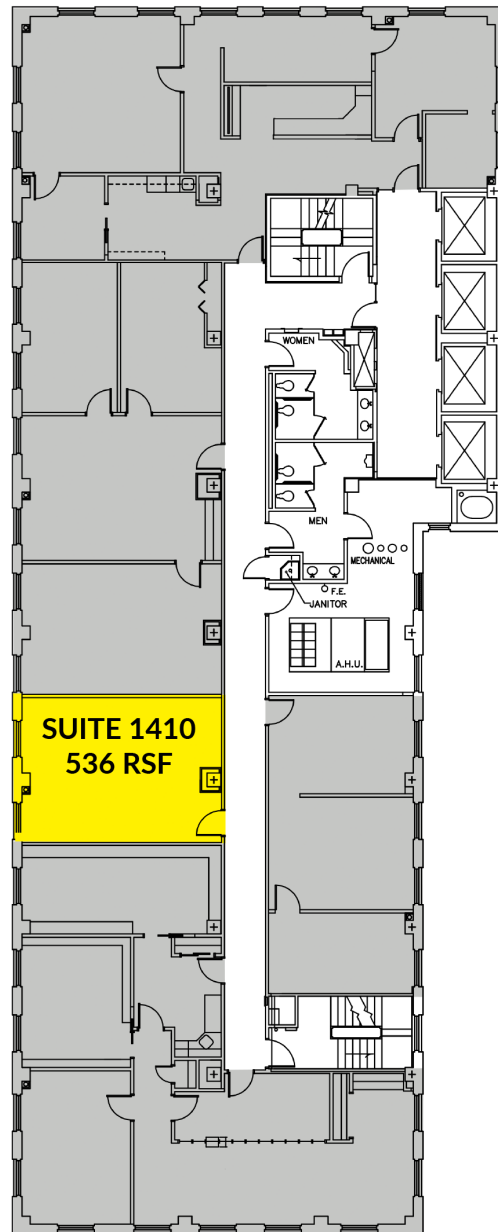




BETHKING
REAL ESTATE, LLC

Regions Bank Building

333 TEXAS STREET, SHREVEPORT, LA 71101

OFFICE SPACE FOR LEASE



 AVAILABLE — 536 RSF
 LEASED

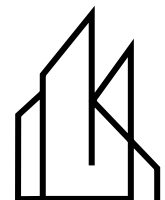
For Additional Information, Contact:

Beth King | 318-453-6066 | beth@bethkingrealestate.com

333 Texas Street, Suite 2280, Shreveport, Louisiana 71101

ALL INFORMATION CONTAINED HEREIN IS BELIEVED TO BE ACCURATE, BUT IS NOT WARRANTED AND NO LIABILITY OF ERRORS OR OMISSIONS IS ASSURED BY EITHER THE PROPERTY OWNER OR BETH KING REAL ESTATE, LLC OR ITS AGENTS AND EMPLOYEES. PRICES AS STATED HEREIN AND PRODUCT AVAILABILITY IS SUBJECT TO CHANGE AND/OR SALE OR LEASE WITHOUT PRIOR NOTICE, AND ALL SIZES AND DIMENSIONS ARE SUBJECT TO CORRECTION. 02/2021

p12

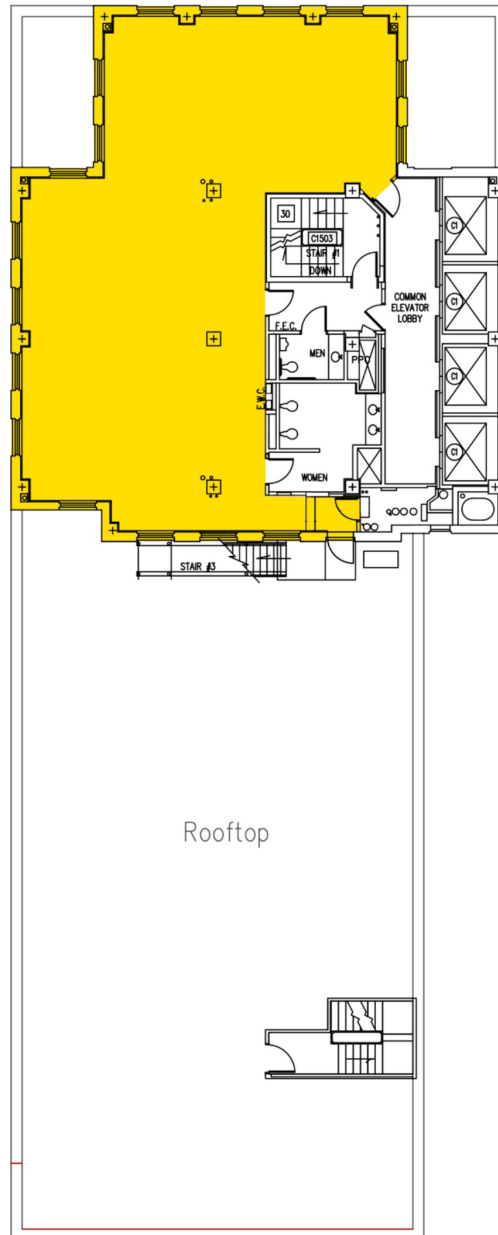


BETHKING
REAL ESTATE, LLC

Regions Bank Building

333 TEXAS STREET, SHREVEPORT, LA 71101

OFFICE SPACE FOR LEASE



AVAILABLE — 2,463 RSF

LEASED

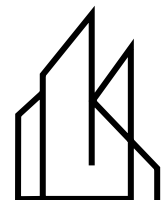
For Additional Information, Contact:

p13

Beth King | 318-453-6066 | beth@bethkingrealestate.com

333 Texas Street, Suite 2280, Shreveport, Louisiana 71101

ALL INFORMATION CONTAINED HEREIN IS BELIEVED TO BE ACCURATE, BUT IS NOT WARRANTED AND NO LIABILITY OF ERRORS OR OMISSIONS IS ASSURED BY EITHER THE PROPERTY OWNER OR BETH KING REAL ESTATE, LLC OR ITS AGENTS AND EMPLOYEES. PRICES AS STATED HEREIN AND PRODUCT AVAILABILITY IS SUBJECT TO CHANGE AND/OR SALE OR LEASE WITHOUT PRIOR NOTICE, AND ALL SIZES AND DIMENSIONS ARE SUBJECT TO CORRECTION. 02/2021



BETHKING
REAL ESTATE, LLC